

SHIFT CONTROL

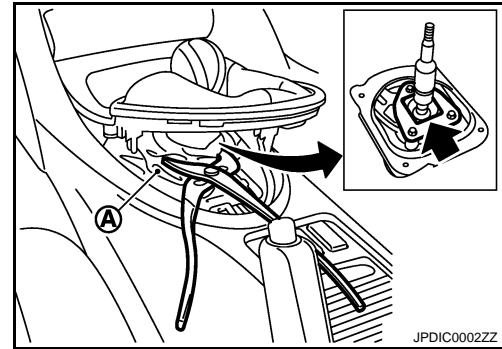
< ON-VEHICLE REPAIR >

[6MT: FS6R31A]

- b. Lift console finisher assembly and then set a suitable pliers to control lever assembly.

CAUTION:

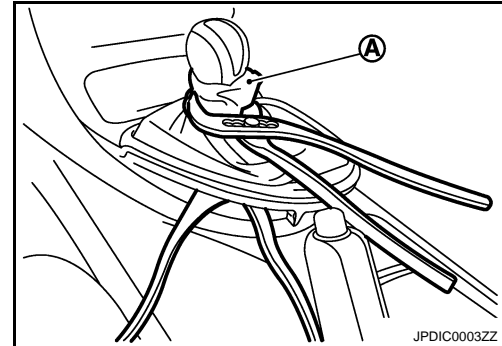
Put waste cloth (A) between a suitable pliers and control lever assembly to avoid damaging control lever assembly.



- c. Set a suitable pliers to shift knob.

CAUTION:

Put waste cloth (A) between a suitable pliers and shift knob to avoid damaging shift knob.



- d. Keeping control lever assembly in place with a suitable pliers, loosen shift knob with a suitable pliers.

NOTE:

Remove shift knob from control lever assembly keeping a suitable pliers in place because a certain power to turn shift knob is still necessary even after adhesive is peeled.

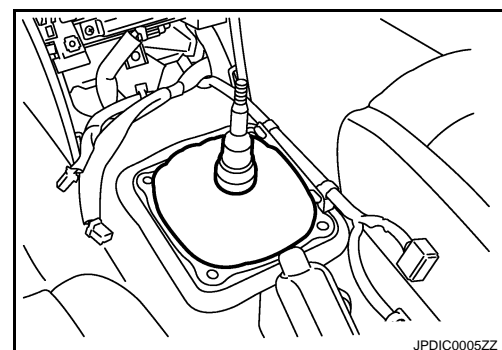
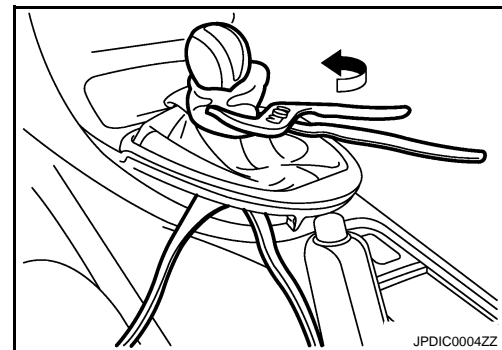
- e. Remove shift knob from control lever assembly.

2. Remove insulator and seat from control lever assembly.

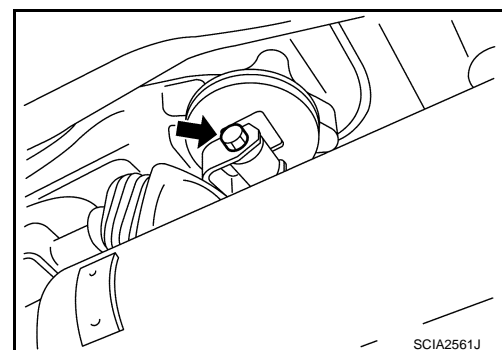
3. Remove console finisher assembly.

4. Remove center console assembly. Refer to [IP-24, "Removal and Installation"](#).

5. Remove felt.



6. Release boot from control lever housing. Then remove control rod mounting bolt and then separate control lever assembly and control rod.



A
B
C
TM
E
F
G
H
I
J
K
L
M
N
O
P

SHIFT CONTROL

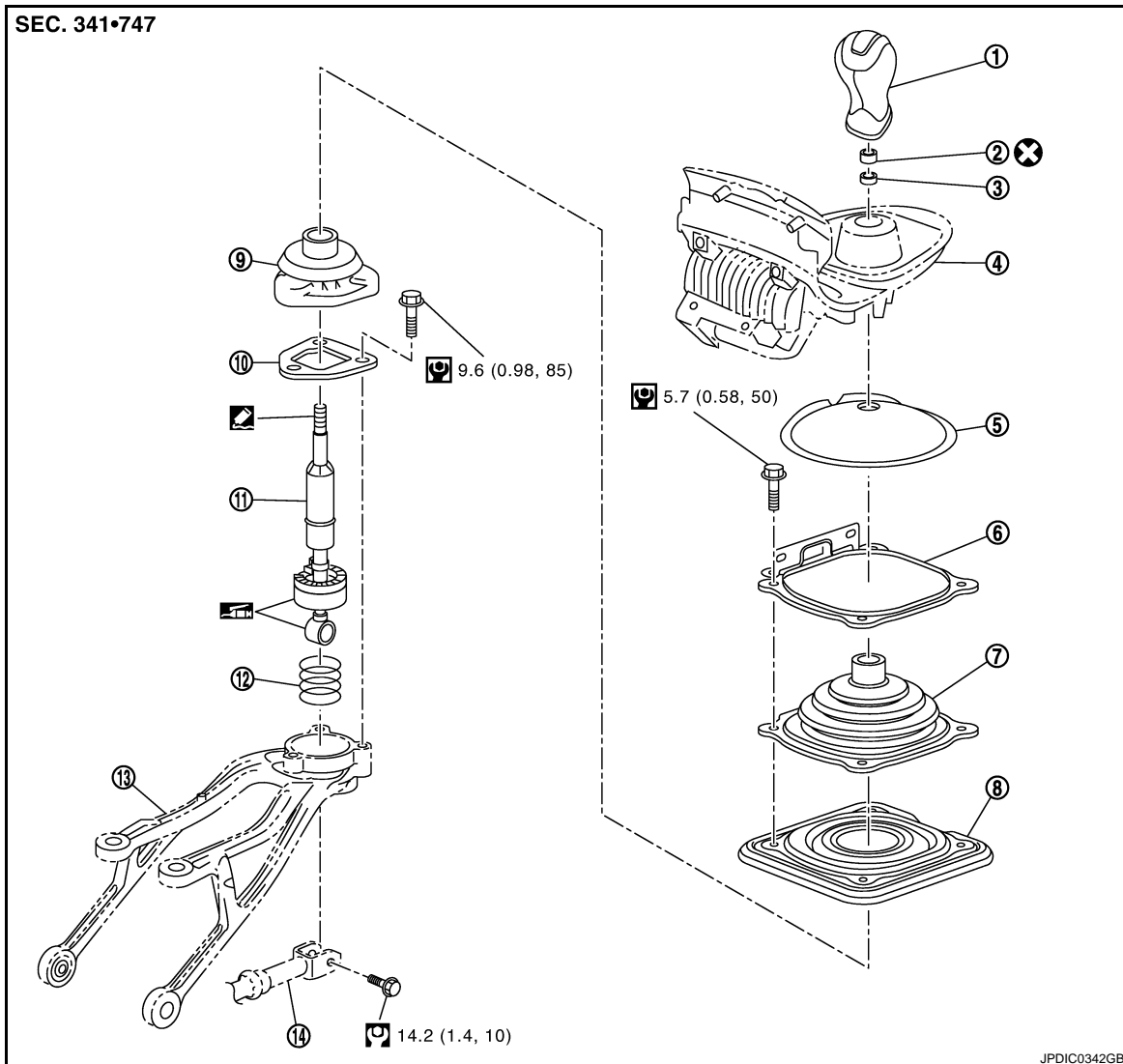
< ON-VEHICLE REPAIR >

[6MT: FS6R31A]

SHIFT CONTROL

Exploded View

INFOID:000000001732872



- | | | |
|------------------------------|----------------------------|--------------------------|
| 1. Shift knob | 2. Insulator | 3. Seat |
| 4. Console finisher assembly | 5. Felt | 6. Hole cover |
| 7. Control lever boot B | 8. Hole insulator | 9. Control lever boot A |
| 10. Guide plate | 11. Control lever assembly | 12. Control lever spring |
| 13. Control lever housing | 14. Control rod | |

: Apply multi-purpose grease.

: Apply Genuine Medium Strength Thread Locking Sealant or an equivalent. Refer to [GI-15, "Recommended Chemical Products and Sealants"](#).

Refer to [GI-4, "Components"](#) for symbols not described on the above.

Removal and Installation

INFOID:000000001732873

REMOVAL

1. Remove shift knob with the following procedure.
 - a. Release metal clips on console finisher assembly. Refer to [IP-24, "Removal and Installation"](#).